

# \$759,900 - 268 Creekstone Path Sw, Calgary

MLS® #A2240610

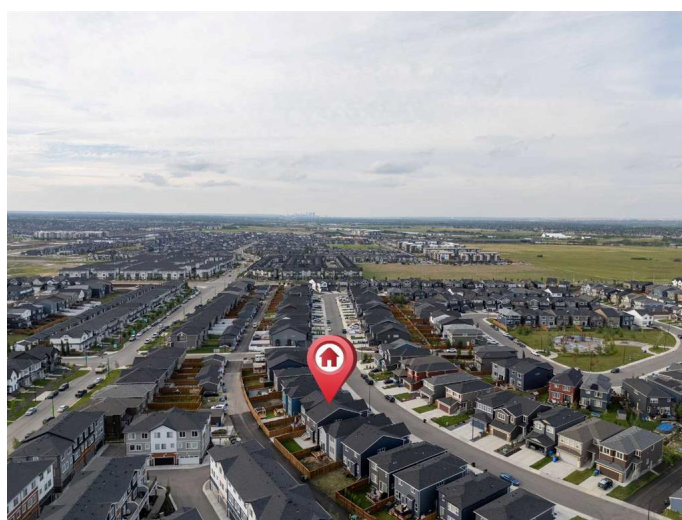
**\$759,900**

3 Bedroom, 3.00 Bathroom, 2,284 sqft

Residential on 0.09 Acres

Pine Creek, Calgary, Alberta

Welcome to your dream home in the vibrant and family-friendly community of Pine Creek! This stunning almost-like-new 2-storey home with a double front-attached garage is packed with upgrades and ready to impress. Step inside to find a bright and versatile office/den with a sunny window, a spacious living room with a cozy fireplace, and an elegant dining area perfect for entertaining. The gourmet kitchen shines with stainless steel appliances, a large island, quartz countertops throughout, and a huge pantry plus a convenient mudroom. A beautiful railing staircase leads you upstairs to 3 generously sized bedrooms, including a luxurious primary retreat with a massive walk-in closet and an incredible 5-piece ensuite featuring a soaker tub, tiled shower, double-sink vanity, and separate water closet. Two more bedrooms—larger than typical—share another upgraded 5-piece bathroom with dual sinks, and the upstairs laundry room adds ultimate convenience. Large windows flood the home with natural light, and the fully fenced, landscaped backyard offers a spacious concrete patio, perfect for outdoor entertaining or relaxing in the sun. The unfinished basement with a side entrance is ready to be developed to suit your imagination—whether it's a secondary suite with city of Calgary's approval, home gym, theater room, or extra living space, the possibilities are endless. Nestled west of Macleod Trail in South Calgary, Pine Creek is where natural beauty meets city



convenienceâ€”surrounded by walking paths, parks, ponds, and quick access to shopping, restaurants, schools, and the Somerset/Bridlewood LRT station. Whether you're soaking in the peaceful ravines or running errands with ease via the Ring Road, this home truly offers it all. Donâ€™t miss outâ€”book your private showing today and explore the 3D tour!

Built in 2022

**Essential Information**

MLS® #	A2240610
Price	\$759,900
Bedrooms	3
Bathrooms	3.00
Full Baths	2
Half Baths	1
Square Footage	2,284
Acres	0.09
Year Built	2022
Type	Residential
Sub-Type	Detached
Style	2 Storey
Status	Active

**Community Information**

Address	268 Creekstone Path Sw
Subdivision	Pine Creek
City	Calgary
County	Calgary
Province	Alberta
Postal Code	T2X 4X9

**Amenities**

Parking Spaces	4
Parking	Double Garage Attached
# of Garages	2

## Interior

Interior Features	Granite Counters, Kitchen Island, No Smoking Home, Quartz Counters
Appliances	Dishwasher, Dryer, Electric Range, Microwave Hood Fan, Refrigerator, Washer, Window Coverings
Heating	Forced Air
Cooling	None
Fireplace	Yes
# of Fireplaces	1
Fireplaces	Gas
Has Basement	Yes
Basement	Exterior Entry, Full, Unfinished

## Exterior

Exterior Features	BBQ gas line, Garden
Lot Description	Back Lane, Back Yard
Roof	Asphalt Shingle
Construction	Vinyl Siding
Foundation	Poured Concrete

## Additional Information

Date Listed	July 16th, 2025
Days on Market	8
Zoning	R-G

## Listing Details

Listing Office	Royal LePage Solutions
----------------	------------------------

Data is supplied by Pillar 9â„¢ MLS® System. Pillar 9â„¢ is the owner of the copyright in its MLS® System. Data is deemed reliable but is not guaranteed accurate by Pillar 9â„¢. The trademarks MLS®, Multiple Listing Service® and the associated logos are owned by The Canadian Real Estate Association (CREA) and identify the quality of services provided by real estate professionals who are members of CREA. Used under license.